

# Grammarly Plugin for Microsoft Word

---

## Overview

This document details how to download and activate the Grammarly plugin for Microsoft Word. Currently, the plugin is only available for Windows computers.

## Requirements

- A Windows computer
- A [Grammarly Account](#)

## Grammarly Plugin in Microsoft Word

### Download the Grammarly Plugin

1. Go to the [Plugin download page](#).
2. If you already have a Grammarly account, click **Log In** at the bottom of the page. If you do not have a Grammarly account, [sign up](#) for one before continuing.

# Create a Free Account

We just need a bit of info to get you going with Grammarly...

Full name Please enter your name

E-mail

Preferred password

I'll use Grammarly mostly for:

-- Please select --

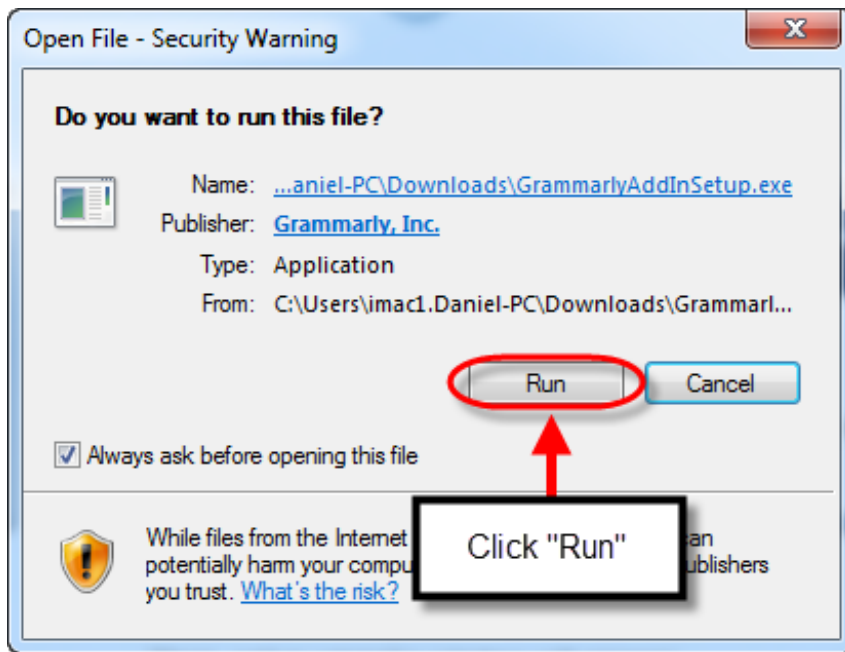
**Create a Grammarly Account**

Already have an account? [Log in](#)

Click "Log In"

By creating a Grammarly account, you confirm that you have read and agree to our [Terms and Conditions](#).

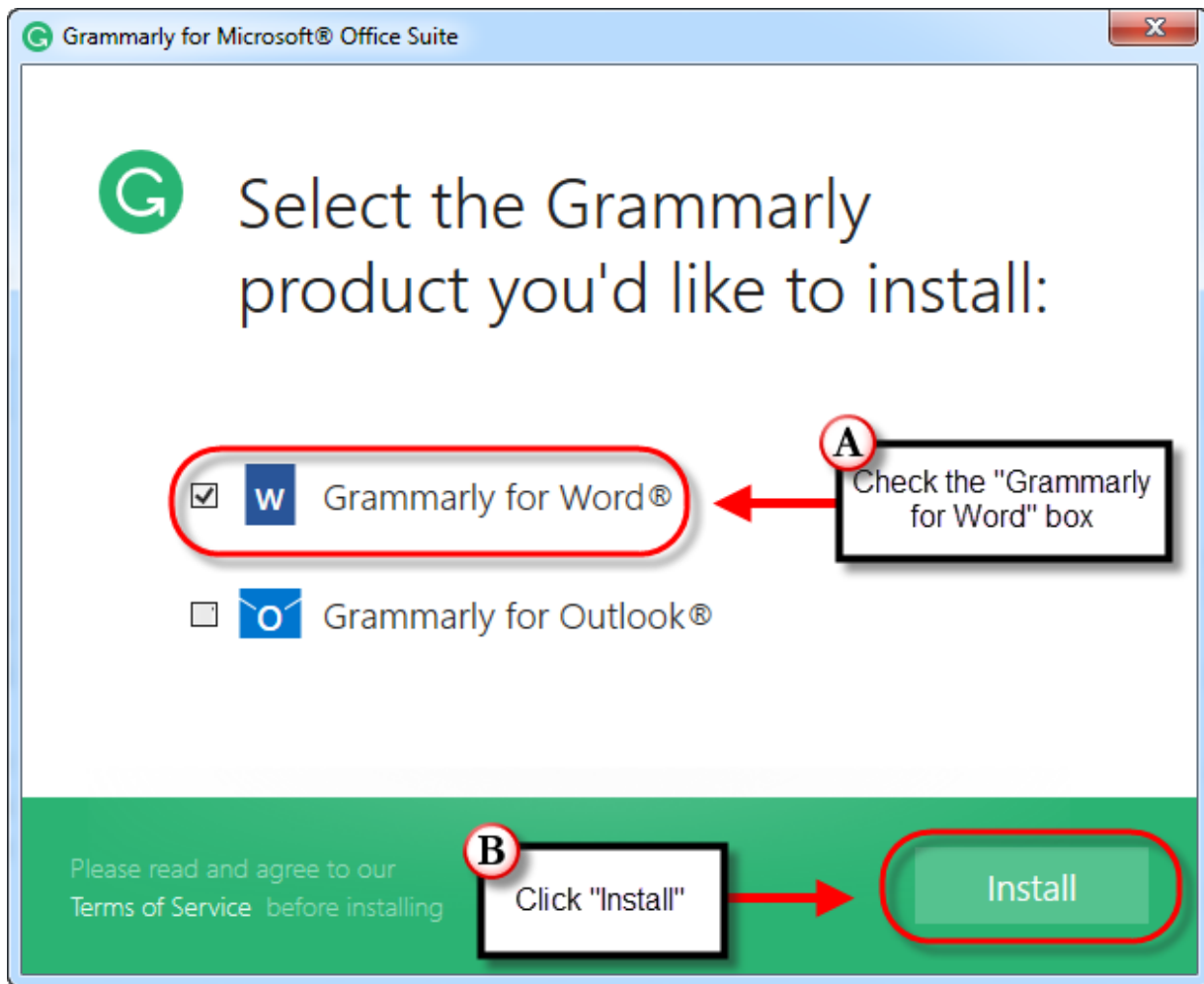
3. After you log in, the file should immediately download. Find and open the downloaded file in your *Downloads Folder* titled **GrammarlyAddInSetup.exe**.
4. In the pop-up window, click **Run**.



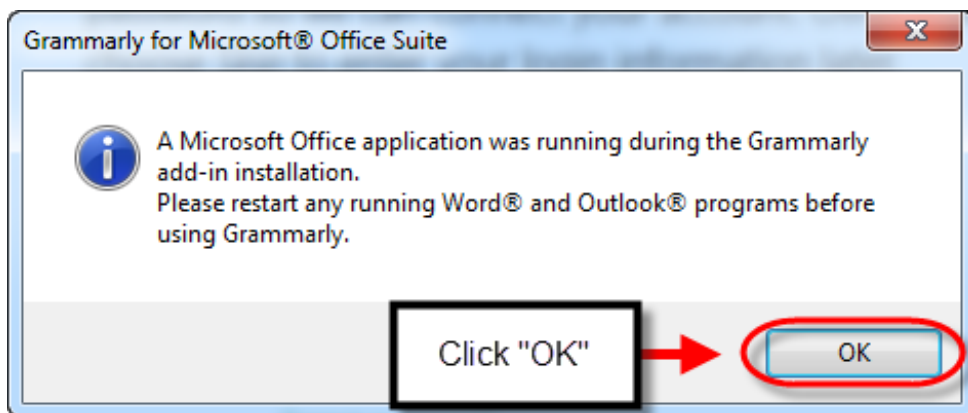
5. In the *Grammarly for Microsoft Office Suite* window, click **Get Started**.



6. Check the **Grammarly for Word** box and then click **Install**.



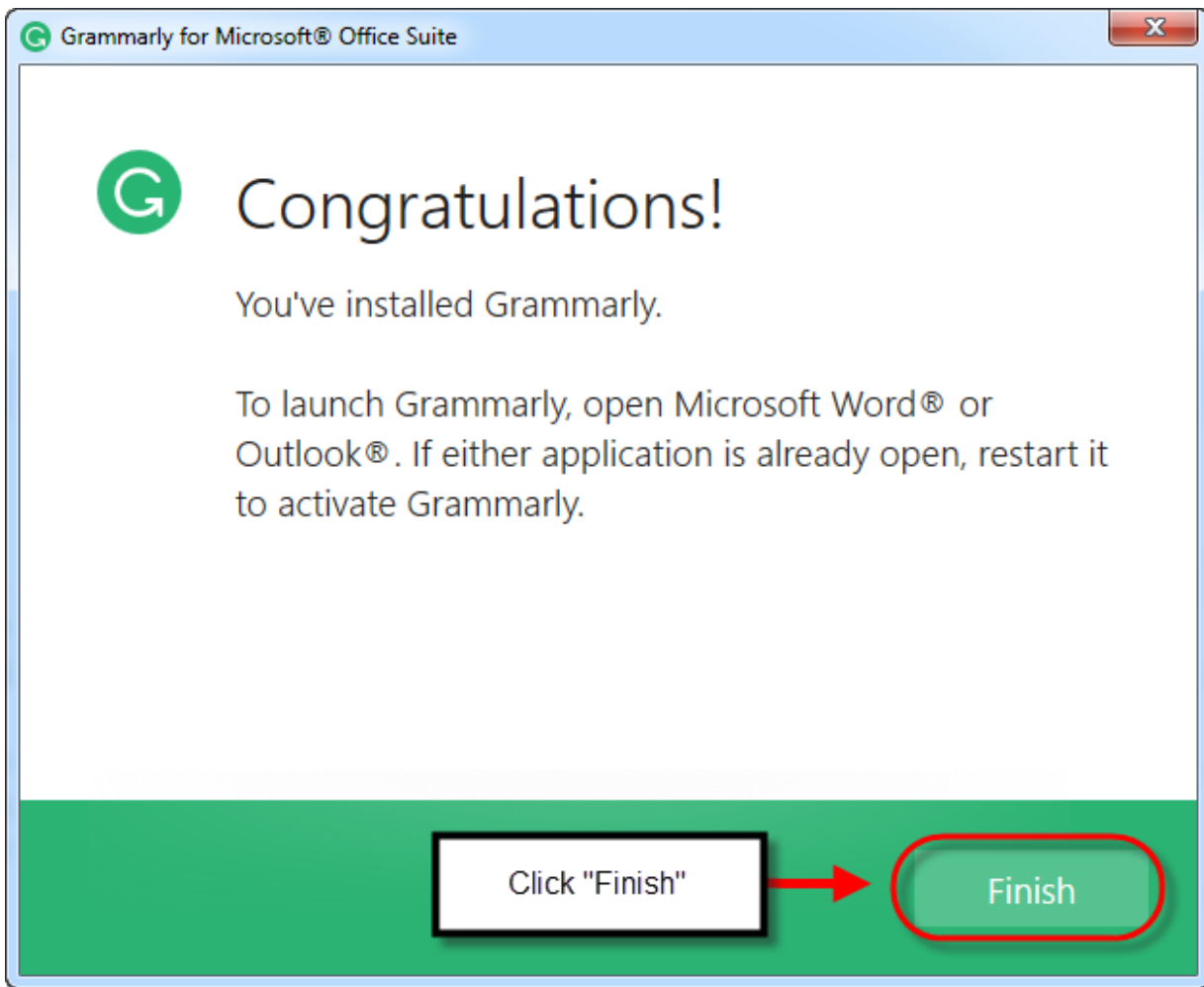
**NOTE:** If a Word is open during the installation, a pop-up window will appear alerting you to restart the program in order to use Grammarly. Click **Ok** to close.



7. In the next window, you can choose to log into Grammarly now by entering your log in information and clicking **Log In** or click **Skip** to log in later.



8. Click **Finish**.



**REMINDER:** If **Microsoft Word** is running during the installation, restart the program to activate Grammarly.

## Turn on Grammarly in Word

1. Open **Microsoft Word**.
2. To the right of the menu bar, click **Enable Grammarly**.

